

Snap-In Patch Panels

Patch Panel 24 Snap-In Fixed White

Contact

LAN Systems (Nexans Cabling Solutions)

Phone: +44 (0)1256 486640

ncs.uk@nexans.com

Nexans ref.: N521.661

- Compatible with all Snap-In connectors
- 24 Snap-In ports with shutters
- Clip-on mechanism
- Exclusive Auto-Connect Earthing system
- Universal design supporting Unscreened and Screened connectors
- Also available in black

DESCRIPTION

Nexans Snap-In range of patch panels are designed to accommodate any of the Snap-In connectors in the LANmark product family (LANmark-7A, LANmark-7, LANmark-6A, LANmark-6, and LANmark-5).

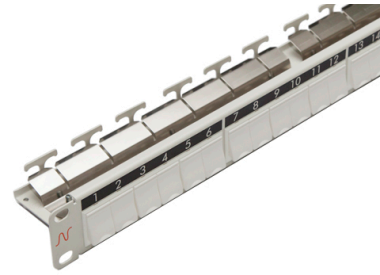
The Snap-In panels feature an exclusive Clip-On system to secure the connector in the panel and to provide a simple means of earthing shielded connectors to facilitate installation. Connection of the panel to earth is achieved with a unique Auto-Connect feature removing the need for individual bonding conductors.

The panels also have a series of complementary cable management products such as blank panels and patch cord guides.

The patch panels are designed for standard 19" enclosures, are 1U high, and support the following common features:

- 24 Ports with shutters
- Designed for Screened and Unscreened Snap-In connectors
- Compatible with all performance categories of connector
- Clip-On mechanism for simple earthing
- Exclusive rear cable management facilities
- Robust construction
- Printed numbering for port labelling

This panel features vertical "T" clips for rapid cable retention which allows loading of the panel in around 25% of the time needed to fasten tie wraps which leads to time saving during installation.



LANmark

STANDARDS

International
Manufacturer specification

Snap-In Patch Panels

Patch Panel 24 Snap-In Fixed White

Contact

LAN Systems (Nexans Cabling Solutions)

Phone: +44 (0)1256 486640

ncs.uk@nexans.com

CHARACTERISTICS

Construction characteristics

Colour	White
--------	-------

Material	Steel
----------	-------

Dimensional characteristics

Heightunit	1 U
------------	-----

Depth	75 mm
-------	-------

Width	19 in
-------	-------

Usage characteristics

Field of application	Fixed installations
----------------------	---------------------

Resistance to vibrations	High
--------------------------	------

Mechanical Resistance	Good mechanical resistance
-----------------------	----------------------------

Number of ports	24
-----------------	----

Packaging	Box
-----------	-----